



# ***MP80 NS***

## ***Micro Pitch Modular Belt Series***

- ***Bakery Applications***

*Row Dough Handling, Divider, Proofer Lines, Laminating Lines*

- ***Meat Applications***

*Transfer - Crossover Conveyance and Metal Detectors*

- ***Seafood Applications***

*Grading Lines and Weighing Lines*

- ***Fruits and Vegetables Applications***

*Control and Sorting Tables*

- ***Snack Food Applications***

*Cooling Lines*

- ***Beverage Applications***

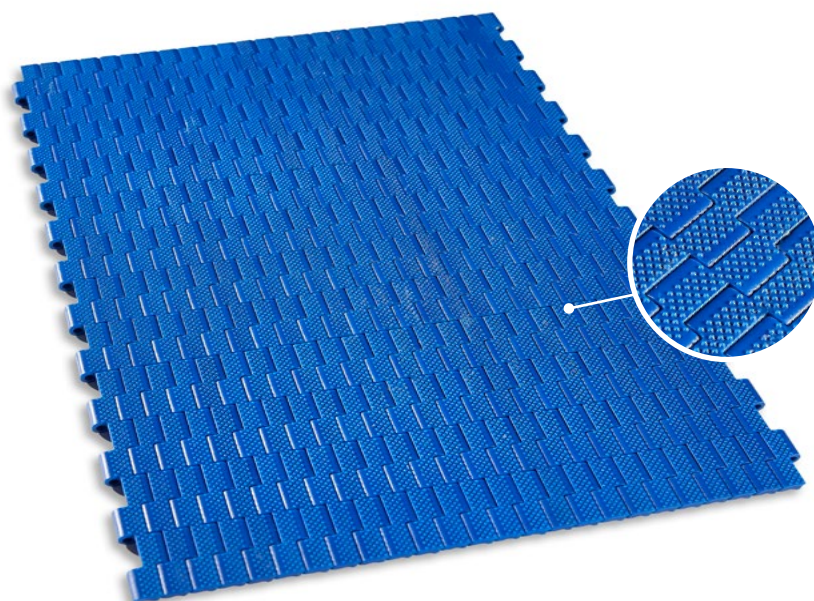
*Box Transfer*



MODUTECH

# MP80 NS

Pitch:	8 mm / <b>0.315 inch</b>
Belt Surface:	Close, Non-Slip Surface
Minimum Width:	101,6 mm / <b>4 inch</b>
Open Area (%):	0%
Flight:	No
Sidewall:	No
Rod:	Ø3 mm / <b>0.118 inch</b>
Approved:	FDA and EU
Curve:	No
Color:	Additional colors available
Cleanability:	Good
Belt Thickness:	6,4 mm / <b>0.252 inch</b>
<b>Min. Nosebar Diameter:</b>	6 mm / <b>0.236 inch</b>



## Product Features and Functional Benefits

- Closed surface and pointed studs, cone top surface pattern for superior grip
- Micro pitch series with small transfer gaps for tight transfer.
- Designed to run over nosebars/knife edges or rollers with a radius down to 3mm (**0.12 inch**) allowing, precise transfer of even the smallest products.
- Optimal design of sprocket teeth, and belt underside provides superior sprocket engagement, safe belt tracking and favorable cleanability.
- Headless pin making it very easy to install and remove the belt for maintenance.

## Available Moulded Module Sizes

- 203,2 mm / **8 inch** module
- 101,6 mm / **4 inch** module

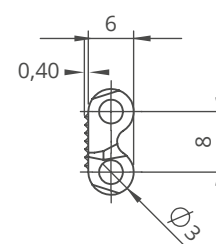
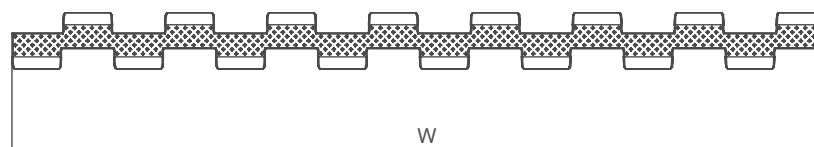
## MP80 NS / Technical Information

BELT / PIN MATERIAL	BELT STRENGTH				TEMPERATURE		BELT WEIGHT
	Straight		Curve		°C / °F (min.)	°C / °F (max.)	Kg/m <sup>2</sup> / lb/ft <sup>2</sup>
	N/m	lb/ft	N/m	lb/ft			
Acetal / Acetal	2750	<b>188</b>	-	-	-43 / <b>-45.4</b>	+110 / <b>+230</b>	5,3 / <b>1.09</b>

- Belt strength and temperature values are maximum on the table.

## MP80 NS / Standard Belt Widths

BELT SERIES	WIDTH (W)				Belt With Tolerance (max.)
	PP-PE		POM		
	mm	inch	mm	inch	
MP80 NS	-	-	101,6	<b>4.0</b>	± 1 mm
MP80 NS	-	-	203,2	<b>8.0</b>	± 1 mm
MP80 NS	-	-	304,8	<b>12.0</b>	± 1 mm
MP80 NS	-	-	406,4	<b>16.0</b>	± 1 mm
MP80 NS	-	-	508,0	<b>20.0</b>	± 2 mm
MP80 NS	-	-	609,6	<b>24.0</b>	± 2 mm
MP80 NS	-	-	711,2	<b>28.0</b>	± 2 mm
MP80 NS	-	-	812,8	<b>32.0</b>	± 2 mm
MP80 NS	-	-	914,4	<b>36.0</b>	± 2 mm



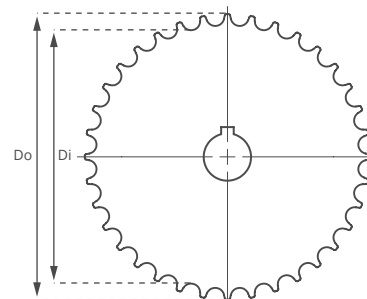
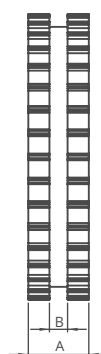
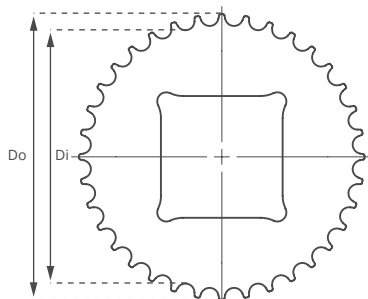
- Standard belt increments 101,6 mm.
  - Non-standard belt increments 25,4 mm.
- Please contact with customer service for precise belt measurements.

www.modutech.com.tr



# MP80 (Micro Pitch Series)

## Technical Specifications



### MP80 Micro Pitch Series / Machined Sprockets Dimensions

NO.TEETH	Di mm/inch	Do mm/inch	B mm/inch	A mm/inch	Square Bore (Q) mm/inch	Round Bore (R) mm/inch	PRODUCT CODE	
							Square Type (Q)	Round Type (R)
Z18	40,9 / <b>1.61</b>	48,0 / <b>1.89</b>	6 / <b>0.23</b>	20 / <b>0.78</b>	20 / <b>0.78</b>	25 / <b>1</b>	MP80SQZ18	MP80SRZ18
Z24	56,4 / <b>2.22</b>	63,7 / <b>2.51</b>	6 / <b>0.23</b>	20 / <b>0.78</b>	25 / <b>1</b>	25-30 / <b>1-1.25</b>	MP80SQZ24	MP80SRZ24
Z36	87,5 / <b>3.44</b>	94,9 / <b>3.74</b>	6 / <b>0.23</b>	20 / <b>0.78</b>	40 / <b>1.57</b>	25-30 / <b>1-1.25</b>	MP80SQZ36	MP80SRZ36

\*All required sprockets produced by CNC.

\*Other sprockets and hub sizes are manufactured up to request.

\*POM (Acetal) and PA (Polyamide) sprockets raw material is available on request.

**\*Machined Split Sprockets are available for each size.**

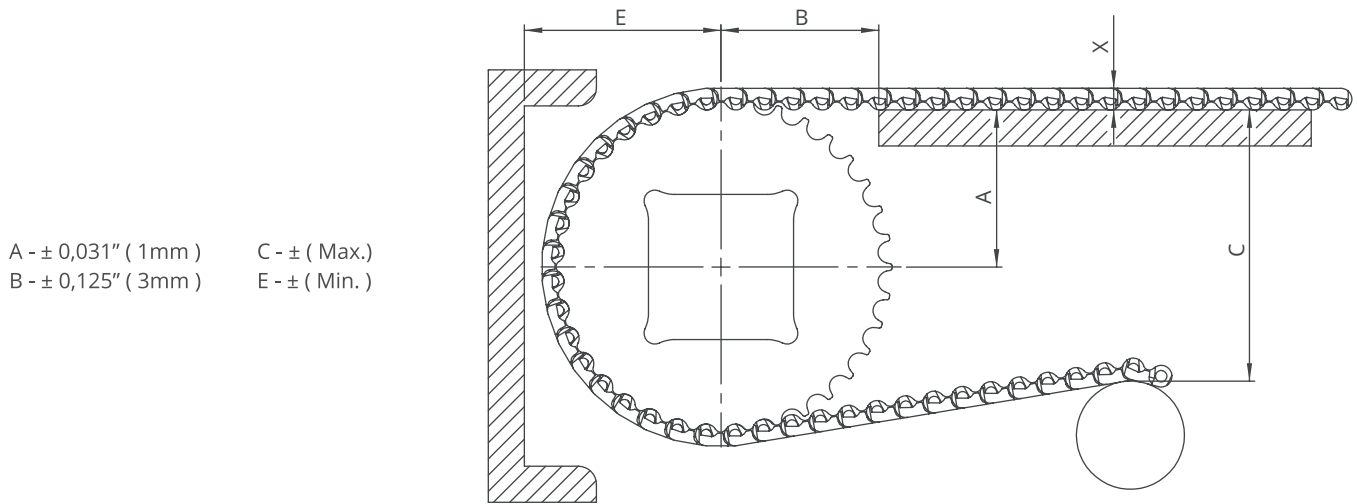


**Precise transfer even the smallest products!**

Micropitch belt series are suitable to run 6 mm nosebar roller.



# MP80 Series *Engineering Information*

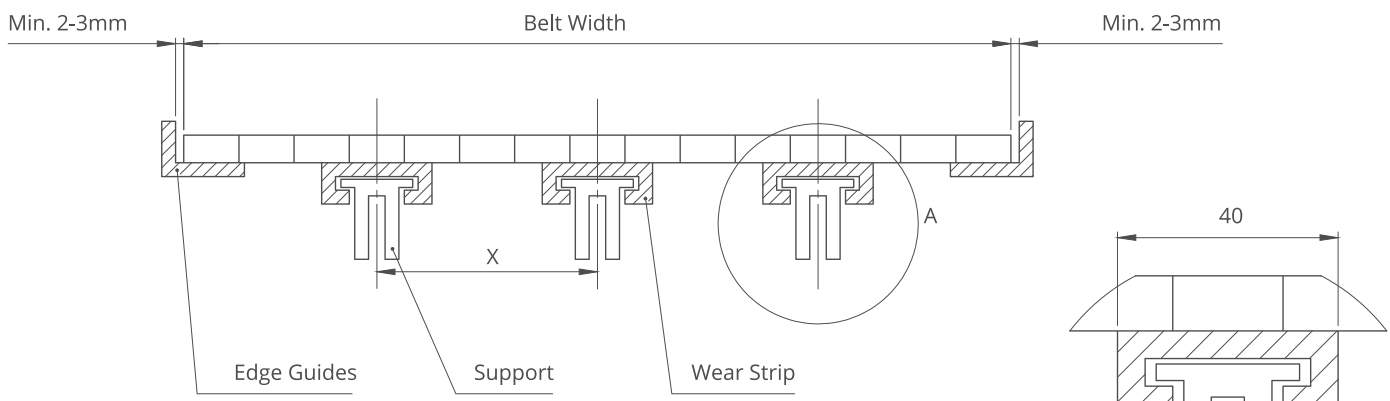


A - ± 0,031" ( 1mm )      C - ± ( Max. )  
 B - ± 0,125" ( 3mm )      E - ± ( Min. )

## MP80 Series / Conveyor Frame Dimensions

Sprockets Description		A		B		C		E		X		
Pitch Diameter		Range (Bottom to Top)		Inch	mm	Inch	mm	Inch	mm	Inch	mm	
Inch	mm	Inch	mm									
<b>MP80 C, MP80 FG, MP80 NP, MP80 NS</b>												
<b>1.85</b>	47,0	18	<b>0.81</b>	20,5	<b>1.18</b>	30,0	<b>1.12</b>	28,5	<b>1.24</b>	31,5	<b>0.24</b>	6,0
<b>1.95</b>	49,5	24	<b>1.11</b>	28,3	<b>1.38</b>	35,0	<b>1.73</b>	44,0	<b>1.55</b>	39,3	<b>0.24</b>	6,0
<b>3.68</b>	93,5	36	<b>1.72</b>	43,8	<b>1.77</b>	45,0	<b>2.95</b>	75,0	<b>2.16</b>	54,8	<b>0.24</b>	6,0

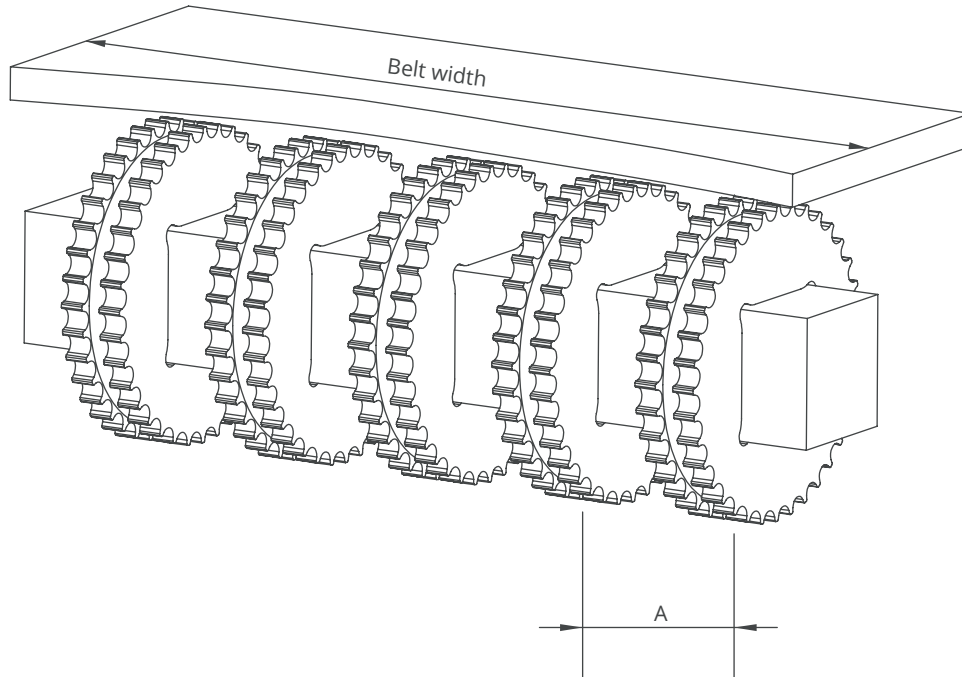
## MP80 Series / Slider Support System For Straight Running Belts



Note: The max. distances between the wear strips have to be ( X ) ;

125 mm for 2" belts  
 80 mm for 1" / 0.5" belts

Detail A  
 Scale 1:1



## MP80 Series / Sprockets Arrangement

Standard Belt Width		Number of sprockets per shaft		A (mm/inch)	
mm	inch	Drive Shaft	Return Shaft	Min.	Max.
101,6	<b>4.0</b>	2	2	50/2	100/4
203,2	<b>8.0</b>	3	2	50/2	100/4
304,8	<b>12.0</b>	4	3	50/2	100/4
406,4	<b>16.0</b>	5	3	50/2	100/4
508,0	<b>20.0</b>	6	4	50/2	100/4
609,6	<b>24.0</b>	7	5	50/2	100/4
711,2	<b>28.0</b>	8	6	50/2	100/4
812,8	<b>32.0</b>	9	7	50/2	100/4
914,4	<b>36.0</b>	10	8	50/2	100/4
1016,0	<b>40.0</b>	11	9	50/2	100/4
1117,6	<b>44.0</b>	12	9	50/2	100/4
1219,2	<b>48.0</b>	13	10	50/2	100/4
1320,8	<b>52.0</b>	14	11	50/2	100/4
1422,4	<b>56.0</b>	14	11	50/2	100/4
1524,0	<b>60.0</b>	15	12	50/2	100/4
1625,6	<b>64.0</b>	16	12	50/2	100/4