



MODUTECH®

# ***MD254 GAP%48***

---

*Modular Belt Serie*

*MD254 GAP%48*

*Sprockets & Accessories*

*Engineering Information*











# MD254 GAP%48

## Modular Belt Serie

- **Bakery Applications**

*Including Oven Infeed - Outfeed, Coating Lines, Glazing Lines, Freezing Lines, Conditioning Lines, Cooling Lines*

- **Poultry Applications**

*Cooling and Freezing Lines*

- **Seafood Applications**

*Including Breeding Machines, Draining Lines*

- **Snack Food Applications**

*Including Proofer Lines, Boiler Infeed, Oven Infeed - Outfeed, Cooling Lines*

- **Fruits and Vegetables Applications**

*Including Prewashing / Rinsing, Draining*

- **Packing Industry**

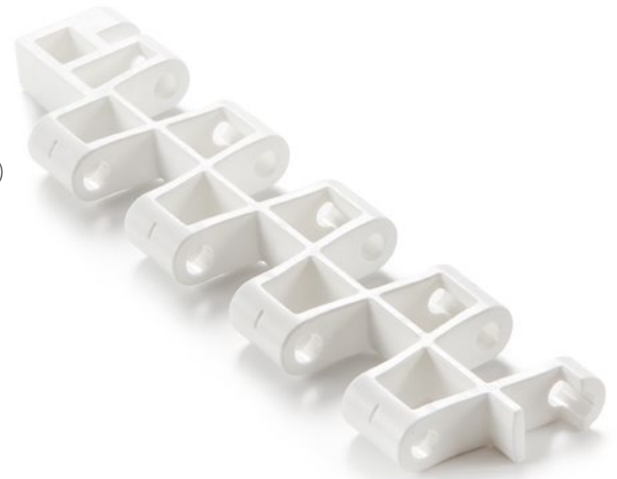
*Shrink Tunnels*



MODUTECH

# MD254 GAP%48

Pitch:	25,7 mm / <b>1 inch</b>
Belt Surface:	Open, Smooth Surface
Minimum Width:	203,2 mm / <b>8 inch</b>
Open Area (%):	48%. ( Biggest opening 9 x 13,5 mm and 6 x 16,5 mm )
Flight:	Yes ( T50 )
Sidewall:	No
Rod:	Ø5 mm / <b>0.197 inch</b> - Self Lock
Approved:	FDA and EU
Curve:	No
Color:	Additional colors available
Cleanability:	Excellent
Belt Thickness:	11 mm / <b>0.433 inch</b>



## Product Features and Functional Benefits

- Belt provides optimal open area for drainage and airflow.
- Less friction and product contact for easy cooking, cooling and freezing of products.
- Reduced dirt and oxide build due to self cleaning surface.
- Stainless steel pins option for high temperature applications.
- Easy to clean reduces downtime for cleaning time 70%.
- Stainless steel pins option reduce belt elongation for high temperature application.

## Available Moulded Module Sizes

- 152,4 mm / **6 inch** module
- 85 mm / **3.35 inch** module

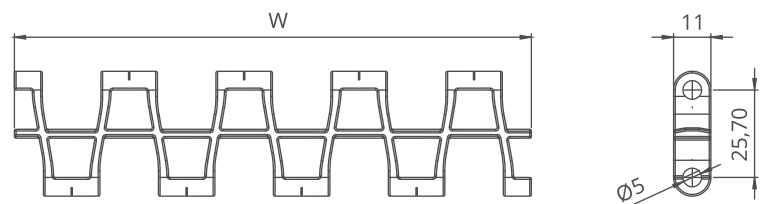
## MD254 GAP%48 / Technical Information

BELT MATERIAL	BELT STRENGTH				TEMPERATURE		BELT WEIGHT
	Straight		Curve		°C / °F (min.)	°C / °F (max.)	Kg/m <sup>2</sup> / lb/ft <sup>2</sup>
	N/m	lb/ft	N/m	lb/ft			
Polypropylene	12100	<b>829</b>	-	-	+5 / <b>+41</b>	+90 / <b>+194</b>	4,2 / <b>0.85</b>
Polyethylene	-	-	-	-	-	-	-
Acetal	17050	<b>1168</b>	-	-	-43 / <b>-45.4</b>	+110 / <b>+230</b>	6,4 / <b>1.33</b>

- Belt strength and temperature values are maximum on the table.

## MD254 GAP%48 / Standard Belt Widths

BELT SERIES	WIDTH (W)				Belt With Tolerance (max.)
	PP		POM		
	mm	inch	mm	inch	
MD254GAP48	203,2	<b>8.0</b>	203,2	<b>8.0</b>	± 0,5 mm
MD254GAP48	237,0	<b>9.0</b>	237,0	<b>9.0</b>	± 1 mm
MD254GAP48	270,8	<b>11.0</b>	270,8	<b>11.0</b>	± 1 mm
MD254GAP48	304,6	<b>12.0</b>	304,6	<b>12.0</b>	± 1 mm
MD254GAP48	338,4	<b>13.0</b>	338,4	<b>13.0</b>	± 2 mm
MD254GAP48	372,2	<b>15.0</b>	372,2	<b>15.0</b>	± 2 mm
MD254GAP48	406,0	<b>16.0</b>	406,0	<b>16.0</b>	± 2 mm
MD254GAP48	439,8	<b>17.0</b>	439,8	<b>17.0</b>	± 2 mm
MD254GAP48	473,6	<b>19.0</b>	473,6	<b>19.0</b>	± 2 mm
MD254GAP48	507,4	<b>20.0</b>	507,4	<b>20.0</b>	± 2 mm
MD254GAP48	541,2	<b>21.0</b>	541,2	<b>21.0</b>	± 2 mm
MD254GAP48	575,0	<b>23.0</b>	575,0	<b>23.0</b>	± 2 mm
MD254GAP48	608,8	<b>24.0</b>	608,8	<b>24.0</b>	± 3 mm
MD254GAP48	642,6	<b>25.0</b>	642,6	<b>25.0</b>	± 3 mm



- Bigger sizes are available with 33,8 mm increments.

- Please contact with customer service for precise belt measurements.

www.modutech.com.tr



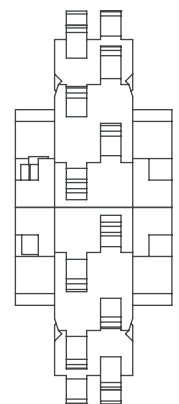
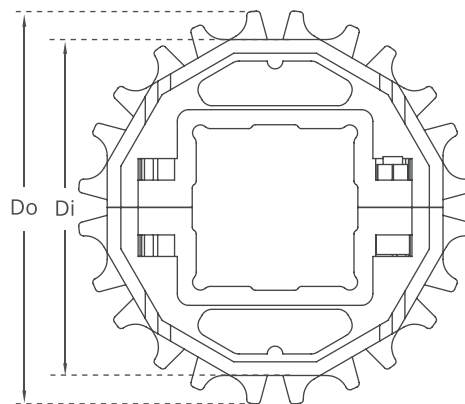
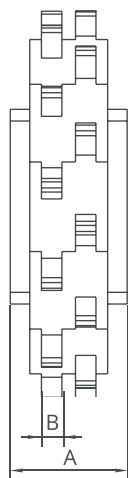
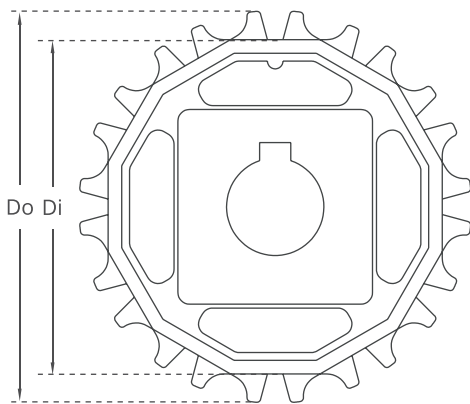
# MD254 GAP%48 Serie *Sprockets and Technical Specifications*



Z15



Z8



Split moulded sprockets are available.

## MD254 GAP%48 Serie / Standard Sprockets Dimensions

NO. TEETH	Di mm/inch	Do mm/inch	B mm/inch	A mm/inch	Square Bore (Q) mm/inch	Round Bore (R) mm/inch	PRODUCT CODE	
							Square Type (Q)	Round Type (R)
Z8	52,0 / <b>2.05</b>	67,0 / <b>2.64</b>	6 / <b>0.24</b>	30 / <b>1.18</b>	25 / <b>1</b>	25 / <b>1</b>	MD-TR254SQ25Z8*POM	MD-TR254SRZ8*POM
Z10	69,0 / <b>2.72</b>	84,0 / <b>3.31</b>	6 / <b>0.24</b>	30 / <b>1.18</b>	40 / <b>1.5</b>	25-30 / <b>1-1.25</b>	MD-TR254SQZ10*POM	MD-TR254SRZ10*POM
Z12	85,8 / <b>3.38</b>	100,8 / <b>3.97</b>	6 / <b>0.24</b>	30 / <b>1.18</b>	40 / <b>1.5</b>	25-30 / <b>1-1.25</b>	MD-TR254SQZ12*POM	MD-TR254SRZ12*POM
Z15	110,8 / <b>4.36</b>	125,8 / <b>4.95</b>	6 / <b>0.24</b>	30 / <b>1.18</b>	40 / <b>1.5</b>	25-30 / <b>1-1.25</b>	MD-TR254SQZ15*POM	MD-TR254SRZ15*POM
Z16	119,1 / <b>4.69</b>	134,1 / <b>5.28</b>	6 / <b>0.24</b>	30 / <b>1.18</b>	40 / <b>1.5</b>	25-30 / <b>1-1.25</b>	MD-TR254SQZ16*POM	MD-TR254SRZ16*POM
Z18	135,6 / <b>5.34</b>	150,6 / <b>5.93</b>	6 / <b>0.24</b>	30 / <b>1.18</b>	40 / <b>1.5</b>	25-30 / <b>1-1.25</b>	MD-TR254SQZ18*POM	MD-TR254SRZ18*POM
Z20	150,7 / <b>5.93</b>	167,3 / <b>6.59</b>	6 / <b>0.24</b>	30 / <b>1.18</b>	40 / <b>1.5</b>	25-30 / <b>1-1.25</b>	MD-TR254SQZ20*POM	MD-TR254SRZ20*POM

\*Other sprockets and hub sizes are manufactured up to request. \*PA (Polyamide) and PP (Polypropylene) sprockets raw material is available on request.

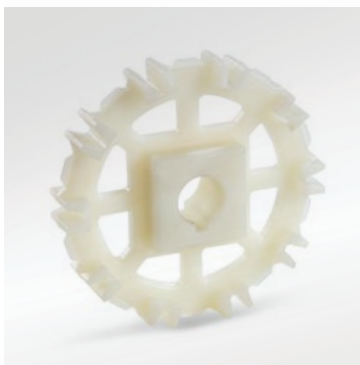
**\*Machined Split Sprockets are available for each size.**



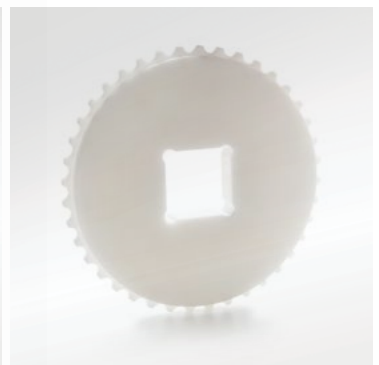
Clamp



Machined Split Sprocket



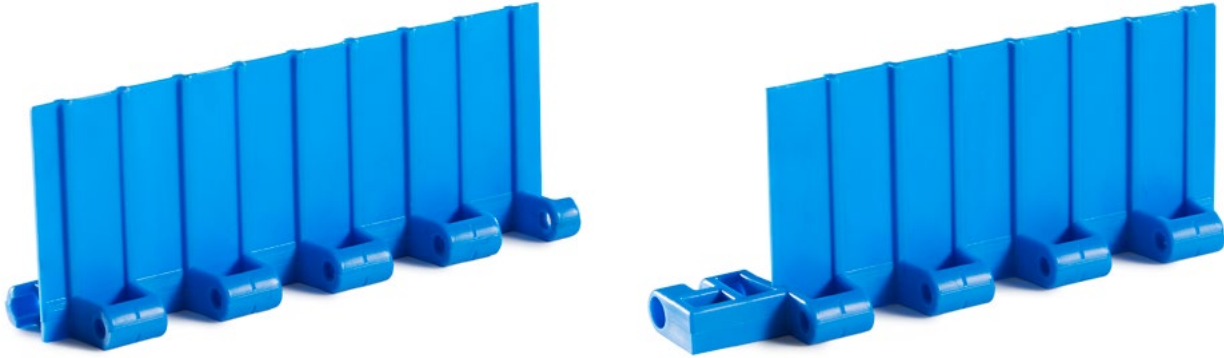
Moulded Sprocket



Machined Sprocket

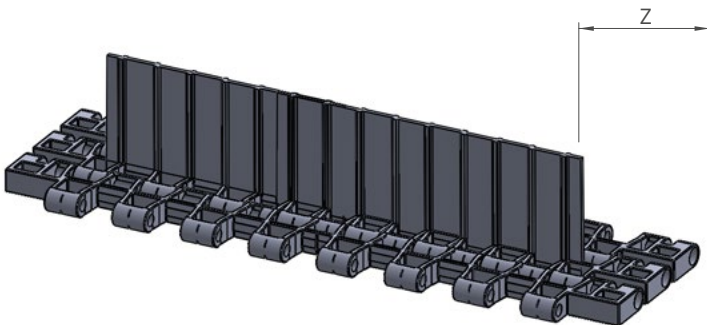
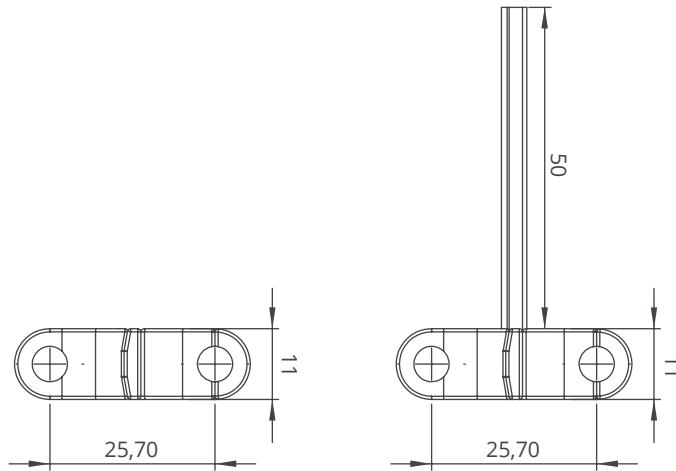


# MD254 GAP%48 Serie *Engineering Information*



## MD254 GAP%48 Serie / Flight Dimensions

MD254 GAP%48 Serie / Flights				
PRODUCT CODE	Flight Height (mm/ <i>inch</i> )	Flight Width (mm/ <i>inch</i> )	PRODUCT CODE	Sidewall Height (mm/ <i>inch</i> )
MD254G48T50	50 / <b>2</b>	152 / <b>6</b>	-	-



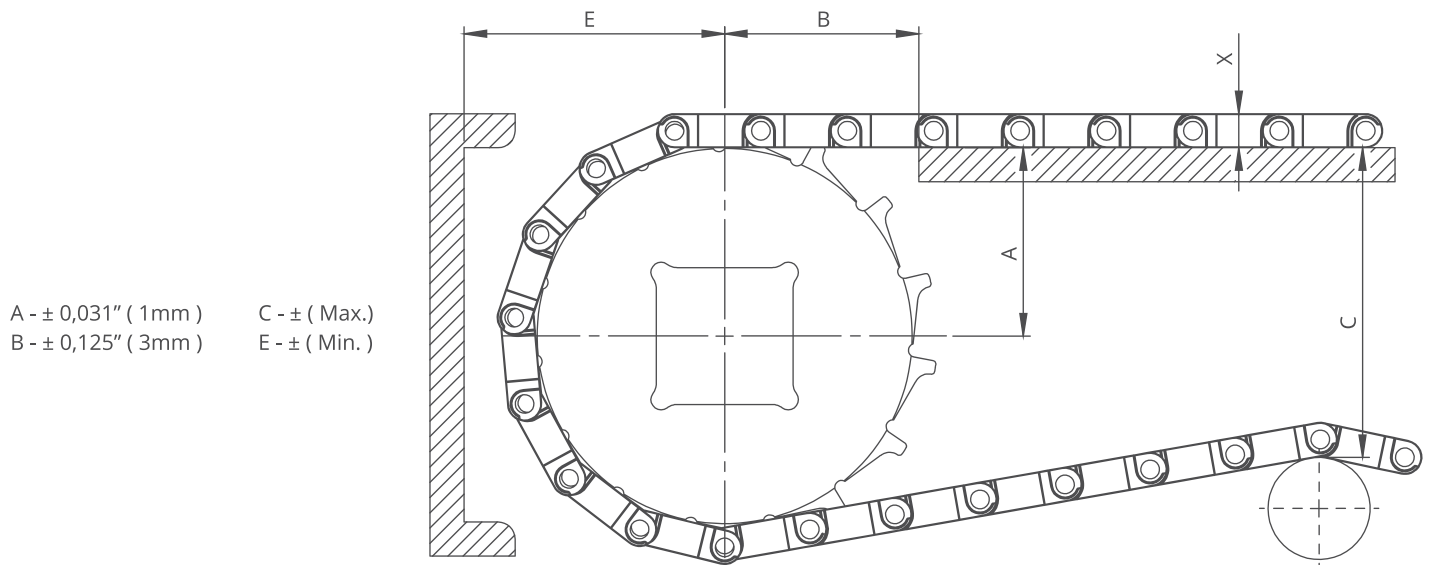
## MD254 GAP%48 Serie / Flight Technical Specifications

Possible Flight Indents for MD254GAP%48 Serie	Z	
	mm	<i>inch</i>
Standard, no module cutting	35,0	<b>1.38</b>
Standard, module cutting	68,8	<b>2.71</b>
Standard, module cutting	102,6	<b>4.04</b>

\*Non-standard flight indent is on request.



# MD254 GAP%48 Serie *Engineering Information*

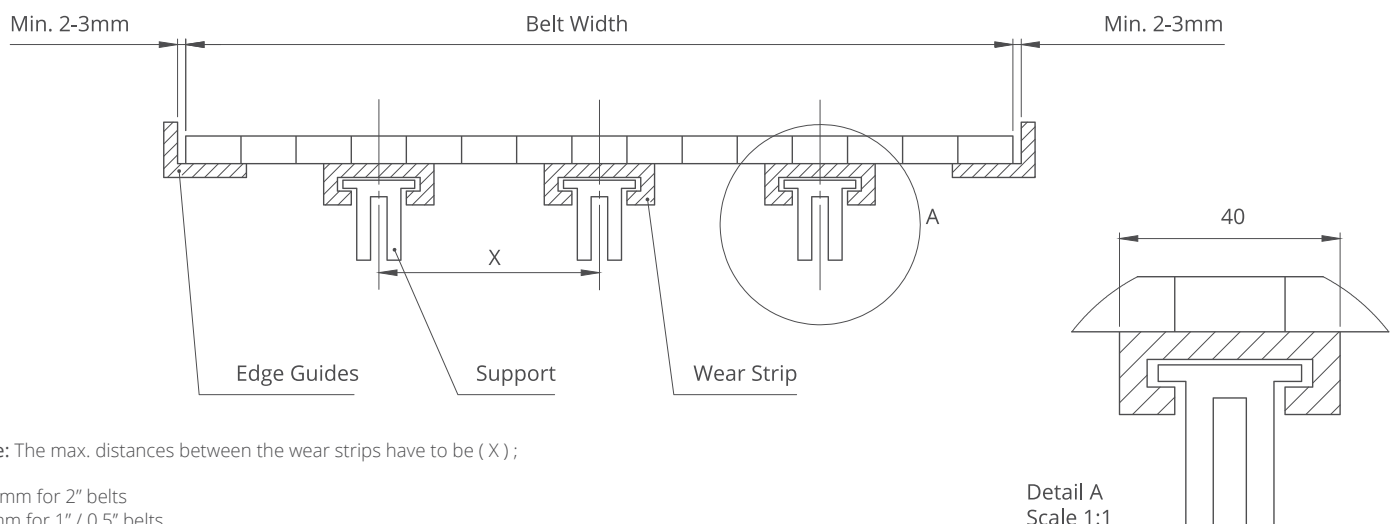


A -  $\pm 0,031''$  ( 1mm )  
 B -  $\pm 0,125''$  ( 3mm )  
 C -  $\pm$  ( Max.)  
 E -  $\pm$  ( Min.)

## MD254 GAP%48 Serie / Conveyor Frame Dimensions

Sprockets Description			A		B		C		E		X	
Pitch Diameter		No.Teeth	Range (Bottom to Top)		inch	mm	inch	mm	inch	mm	inch	mm
inch	mm		inch	mm								
<b>MD254 GAP%48</b>												
<b>2.38</b>	60,5	8	<b>1.15</b>	29,2	<b>1.55</b>	39,4	<b>1.95</b>	49,5	<b>1.94</b>	49,2	<b>0.43</b>	11,0
<b>3.07</b>	78,0	10	<b>1.46</b>	37,1	<b>1.77</b>	45,0	<b>2.60</b>	66,1	<b>2.25</b>	57,1	<b>0.43</b>	11,0
<b>3.74</b>	95,0	12	<b>1.76</b>	44,8	<b>1.97</b>	50,1	<b>3.24</b>	82,3	<b>2.55</b>	64,8	<b>0.43</b>	11,0
<b>4.70</b>	119,5	15	<b>2.22</b>	56,4	<b>2.23</b>	56,7	<b>4.18</b>	106,1	<b>3.01</b>	76,4	<b>0.43</b>	11,0
<b>5.02</b>	127,5	16	<b>2.37</b>	60,2	<b>2.38</b>	60,5	<b>4.46</b>	113,2	<b>3.21</b>	81,5	<b>0.43</b>	11,0
<b>5.71</b>	145,0	18	<b>2.73</b>	69,3	<b>2.45</b>	62,3	<b>5.19</b>	131,8	<b>3.51</b>	89,3	<b>0.43</b>	11,0

## MD254 GAP%48 Series / Slider Support System For Straight Running Belts



Note: The max. distances between the wear strips have to be ( X ) ;

125 mm for 2" belts  
 80 mm for 1" / 0.5" belts

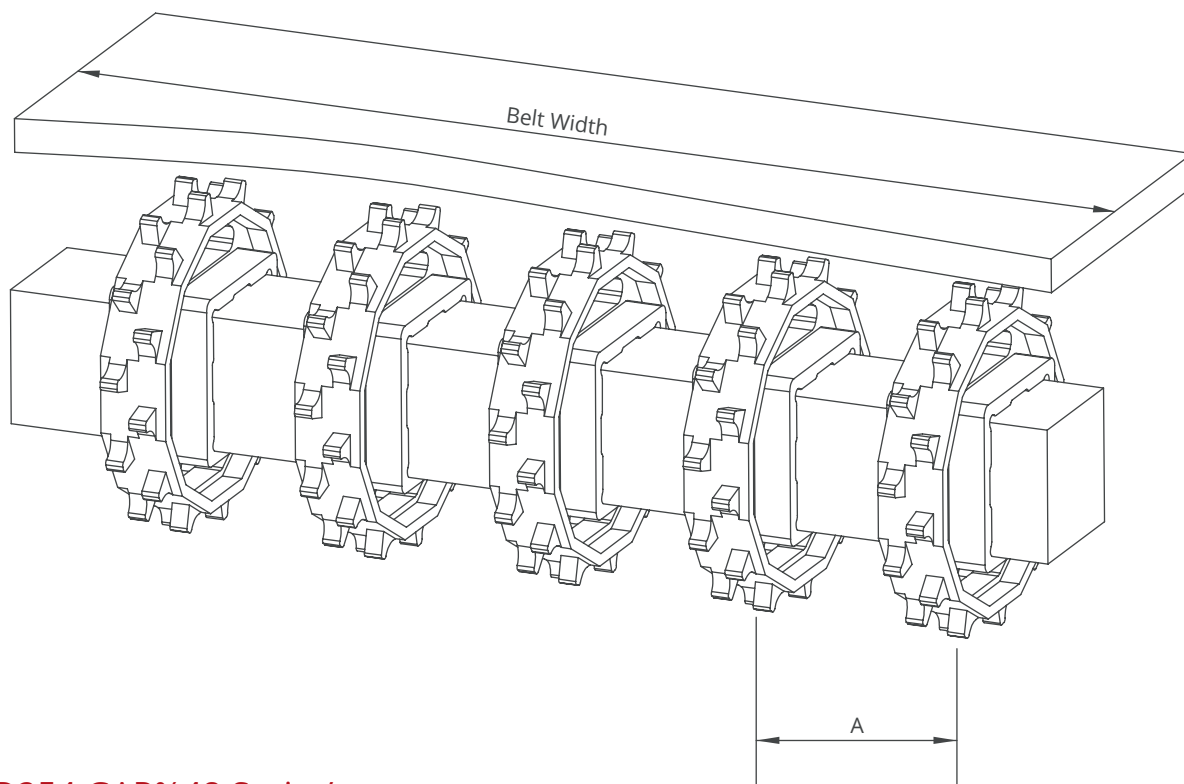
Detail A  
 Scale 1:1



# MD254 GAP%48 Serie *Engineering Information*



MODUTECH



## MD254 GAP%48 Serie / Sprockets Arrangement

Standard Belt Width		Number of sprockets per shaft		A (mm/inch)	
mm	inch	Drive Shaft	Return Shaft	Min.	Max.
203,2	8.0	2	2	60/2.36	170/6.6
237,0	9.3	2	2	60/2.36	170/6.6
270,8	10.7	2	2	60/2.36	170/6.6
304,6	12.0	3	2	60/2.36	170/6.6
338,4	13.3	3	2	60/2.36	170/6.6
372,2	14.7	4	3	60/2.36	170/6.6
406,0	16.0	4	3	60/2.36	170/6.6
439,8	17.3	4	3	60/2.36	170/6.6
473,6	18.6	5	3	60/2.36	170/6.6
507,4	20.0	5	3	60/2.36	170/6.6
541,2	21.3	5	3	60/2.36	170/6.6
575,0	22.6	5	3	60/2.36	170/6.6
608,8	24.0	6	4	60/2.36	170/6.6
642,6	25.3	6	4	60/2.36	170/6.6
676,4	26.6	6	4	60/2.36	170/6.6
710,2	28.0	7	4	60/2.36	170/6.6
744,0	29.3	7	4	60/2.36	170/6.6
777,8	30.6	7	4	60/2.36	170/6.6
811,6	32.0	7	4	60/2.36	170/6.6
845,4	33.3	8	4	60/2.36	170/6.6
879,2	34.6	8	5	60/2.36	170/6.6
913,0	35.9	8	5	60/2.36	170/6.6
946,8	37.3	8	5	60/2.36	170/6.6
980,6	38.6	8	5	60/2.36	170/6.6
1014,4	39.9	9	5	60/2.36	170/6.6
1048,2	41.3	9	5	60/2.36	170/6.6

Note: Number of sprockets depends on the belt load.